

# Alfa Laval BDDQE1004CY112

## Specifications

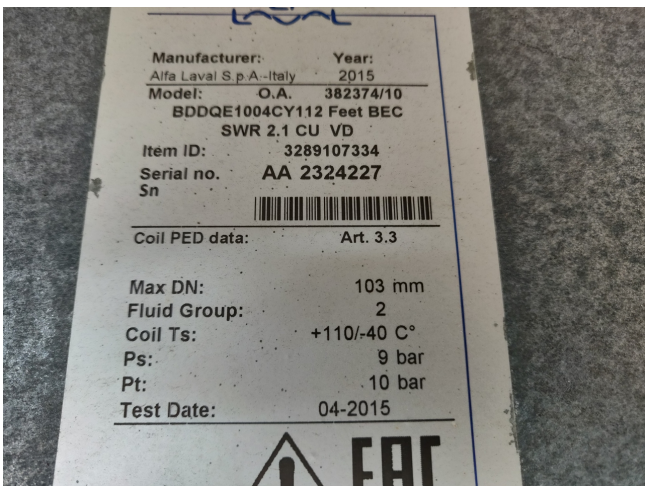
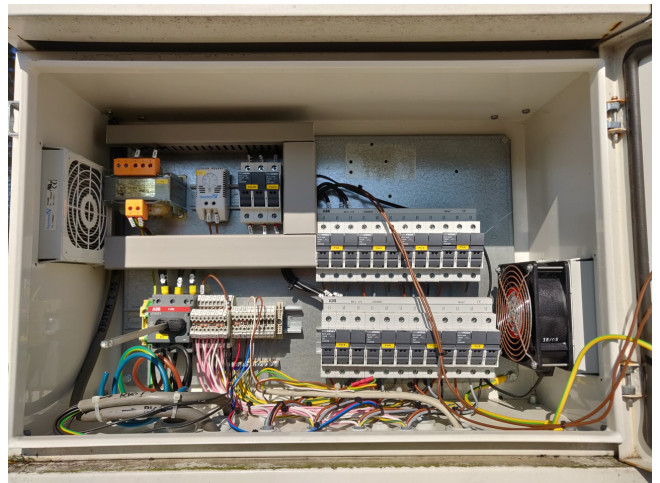
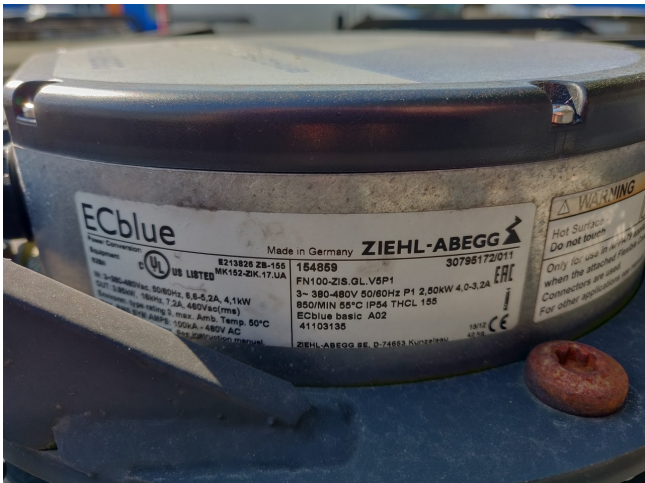
Merk	Alfa Laval
Type	BDDQE1004CY112
Product type	Drycooler
Capaciteit kW	502,69
Aantal Ventilatoren	8
Toerental Ventilatoren	850
Koudemiddel	Glycol
Luchtstroom in m <sup>3</sup> /h	126.195
Afmetingen	8800x2250x1020mm (LxWxH)
Opmerkingen	Year of Manf: 2015 // see page 5 in pdf
Stock	1

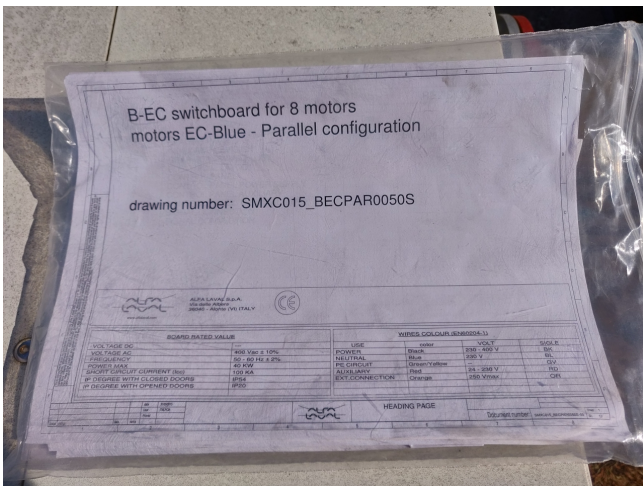
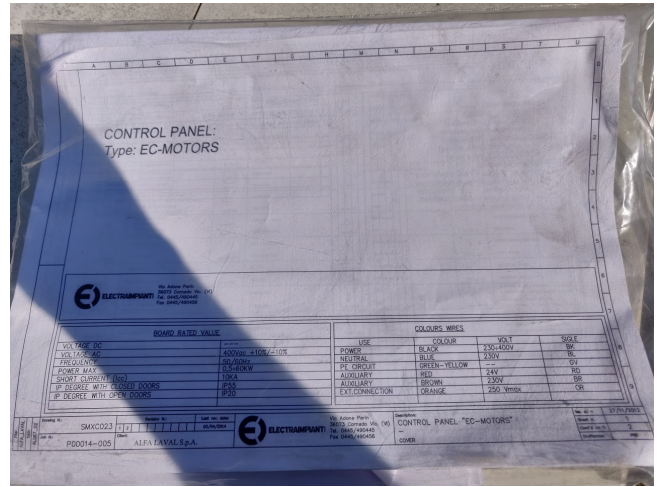


## Description

### Used Alfa Laval BDDQE1004CY112

Afmetingen: 8800x2250x1020mm (LxBxH) Gewicht: 1530kg Ventilatoren: 8 Cblue Ø: 100 RPM: 850 m<sup>3</sup> / h: 126.195 380V / 480V:: 50hz / 60hz: Merk: Alfa Laval Model: BDDQE1004CY112 \*\* Alle componenten van deze gebruikte condensor worden getest op een goede werking, lekvrije staat (elektromotor), condensblok, lagers) Kiezen voor HOSBV betekent kopen met garantie. We voeren een industriële reiniging uit en roestplekken worden afgedekt. Ook kunnen we uw zending regelen.







# Your partner for used commercial and industrial refrigeration equipment

Model	Capacity [kW]		Airflow [m³/h]		Pressure Drop fluid [kPa]		Lp [R/A]†		Motor (2400V-50Hz)		Fans N° x D [mm]	Surface m²	Tube vol. [mm]		E.E.C.**		Conn. Size	
	Δ	Y	Δ	Y	Δ	Y	Δ	Y	Δ	Y			Δ	Y	Inlet	Outlet		
<b>Ø 1000</b>																		
BDCL1002A	247.99	217.49	117369	92038	31.56	25.01	59	54				4x1000	614	52.9	D	D	2x3"	2x3"
BDCL1002B	282.98	252.24	136265	106203	36.24	28.94	59	54				4x1000	901	79.4	D	D	2x3"	2x3"
BDCL1002C	310.38	245.39	14645	61893	43.71	28.79	59	54				4x1000	1228	105.8	D	D	2x3"	2x3"
BDCL1002D	325.23	251.31	179511	57952	69.22	43.94	59	54				4x1000	1535	132.3	D	D	2x3"	2x3"
BDCL1002A	360.41	316.29	175877	137966	13.01	10.32	61	56				6x1000	917.4	79.1	D	D	2x4"	2x4"
BDCL1002B	420.33	364.42	135600	99761	59.66	40.55	61	56				6x1000	1335.1	115.6	D	D	2x4"	2x4"
BDCL1002C	464.08	386.93	126749	92968	41.29	27.19	61	56				6x1000	1834.8	158.1	D	D	2x4"	2x4"
BDCL1002D	481.15	372.32	118028	86750	29.97	18.81	61	56				6x1000	2293.5	197.6	D	D	2x4"	2x4"
BDCL1004A	426.6	422.9	234384	187764	33.05	23.82	62	57				6x1000	1220.8	105.2	D	D	2x4"	2x4"
BDCL1004B	548.3	447.23	180675	132929	17.63	12.35	62	57				6x1000	1831.1	157.8	D	D	2x4"	2x4"
BDCL1004C	602.85	477.65	188851	123442	12.55	8.3	62	57				6x1000	2441.5	210.3	D	D	2x4"	2x4"
BDCL1004D	647.8	503.05	138644	115248	96.08	41.93	62	57				6x1000	3051.9	262.9	D	D	2x4"	2x4"
BDCL1005B	696.42	566.95	225749	165093	35.74	23.38	63	58				10x1000	2286.2	197	D	D	2x4"	2x4"
BDCL1005C	764.34	694.68	210953	154216	23.87	15.7	63	58				10x1000	3048.3	262.6	D	D	2x4"	2x4"
BDCL1005D	792.38	614.27	198050	144342	17.07	10.89	63	58				10x1000	3810.4	328.2	D	D	2x4"	2x4"
BDOD 1002A	230.43	183.51	76182	54791	63.72	44.48	40	38				4x1000	614	52.9	B	B	2x3"	2x3"
BDOD 1002B	237.52	183.97	69672	48916	44.23	28.01	45	38				4x1000	921	79.4	B	B	2x3"	2x3"
BDOD 1002C	252.54	199.84	63336	44375	65.71	39.65	45	38				4x1000	1228	105.8	B	D	2x3"	2x3"
BDOD 1002A	303.1	244.8	114158	85353	64.98	45.35	47	40				6x1000	917.4	79.1	C	B	2x4"	2x4"
BDOD 1002B	355.22	276.14	104311	73203	45.84	27.14	47	40				6x1000	1376.1	115.6	B	B	2x4"	2x4"
BDOD 1002C	373.34	280.81	94766	66403	28.04	16.96	47	40				6x1000	1834.8	158.1	B	E	2x4"	2x4"
BDOD 1004A	388.67	317.25	152120	109315	19.67	13.75	48	41				6x1000	1220.8	105.2	C	B	2x4"	2x4"
BDOD 1004B	479.06	370.62	138649	97523	65.88	40.51	48	41				6x1000	1831.1	157.8	B	B	2x4"	2x4"
BDOD 1005A	502.69	377.61	126195	88430	62.62	37.81	48	41				6x1000	2441.5	210.3	B	E	2x4"	2x4"
BDOD 1005A	493.41	422.67	190084	136577	37.37	26.1	49	42				10x1000	1524.2	131.3	C	B	2x4"	2x4"
BDOD 1005B	584.99	483.24	175987	121807	34.69	19.89	49	42				10x1000	2286.2	197	B	B	2x4"	2x4"
BDOD 1005C	614.96	483.08	157623	113457	15.17	9.8	49	42				10x1000	3048.3	262.6	B	E	2x4"	2x4"
BDOR 1002A	186.3	139.2	67468	42964	56.01	33.65	43	34				4x1000	614	52.9	B	B	2x3"	2x3"
BDOR 1002B	219.9	154.9	61296	38563	89.23	48.14	43	34				4x1000	921	79.4	B	A	2x3"	2x3"
BDOR 1002A	279.0	206.5	101081	64892	57.12	34.91	45	36				6x1000	917.4	79.1	B	B	2x4"	2x4"
BDOR 1002B	324.7	229.2	91759	57722	36.51	19.71	45	36				6x1000	1376.1	115.6	B	A	2x4"	2x4"
BDOR 1004A	361.4	270.7	134892	85738	17.31	10.45	46	37				6x1000	1220.8	105.2	B	B	2x4"	2x4"
BDOR 1004B	437.9	326.6	122221	76881	62.25	44	46	37				6x1000	1831.1	157.8	B	A	2x4"	2x4"
BDOR 1005A	458.8	343.2	168504	107125	32.86	19.78	47	38				10x1000	1524.2	131.3	B	B	2x4"	2x4"
BDOR 1005B	534.4	377.8	152983	96039	21.05	11.38	47	38				10x1000	2286.2	197	B	A	2x4"	2x4"

Nominal capacities according to standard EN1048 (water Tair=25°C, Tin=40°C, Tout=35°C).

\*See the General Contents for more details.

\*\*Energy Efficiency Class: see "General Contents" for more details.